



## KEY SPECS

**Platform Height**  
32-ft 3-in / 9.83-m

**Horizontal Outreach**  
14-ft-11-in / 4.55-m

**Up and Over Height**  
22-ft-9.5-in / 6.95-m

**Platform Capacity**  
500-lb / 227-kg

## KEY FEATURES

- Reach up and over obstacles in tight spaces with a vertical telescopic mast with a jib.
- Equipped for indoor jobs with standard non-marking tires and efficient electric power, and for outdoor work with 25% gradeability.
- Unmatched positioning capabilities with a 345 degree rotating mast.
- Optimum battery life and more duty cycles with AC direct electric drive.

## STANDARD SPECIFICATIONS

### Performance

Platform Height	32-ft 3-in / 9.83-m
Horizontal Outreach	14-ft-11-in / 4.55-m
Up and Over Height	22-ft-9.5-in / 6.95-m
Swing	345 Degrees Non-continuous
Platform Capacity	500-lb / 227-kg
Platform Size	28 x 41-in / 70 x 105-cm
Weight*	10,140-lb / 4,600-kg
Ground Bearing Pressure	185 psi / 13 kg/cm <sup>2</sup>
Ground Clearance	3.9-in / 10-cm
Drive Speed (Stowed)	3.4 mph / 5.5 km/h
Drive Speed (Elevated)	0.47 mph / 0.76 km/h
Gradeability	25%
Turning Radius (Inside)	2-ft-6-in / 75-cm
Turning Radius (Outside)	8-ft-6-in / 2.6-m

\*Certain options or country standards increase weight

### Power Source

Batteries	48V DC, 260 amp-hr
Charger	25 amps

### Brakes

Spring Applied Disc

### Tires

18-in x 7-in Non-Marking

## STANDARD FEATURES

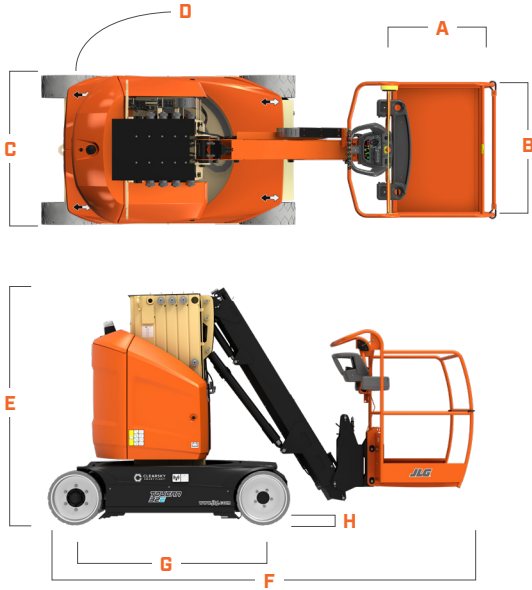
- 110V-AC Receptacle in the Platform
- 345 Degree Non-continuous Swing
- 5 Degree Tilt Alarm/Indicator Light
- All Motion Alarm
- Battery Condition Indicator
- ClearSky Smart Fleet™ Hardware (CS550)
- Emergency Lowering Pump
- Horn
- Hourmeter
- LED Motion/Amber Beacon (CS550)
- Lifting Eyes
- Load Sensing System
- Proportional Controls
- Platform, Saloon Gate
- SkyGuard SkyLine™
- Tie-down Lugs
- Warning Beacon

## ACCESSORIES & OPTIONS

- 5/16-in Airline
- 70W Platform Work Light
- Batteries, 48V AGM
- Console Cover
- Platform, Drop Bar
- Platform Rotator

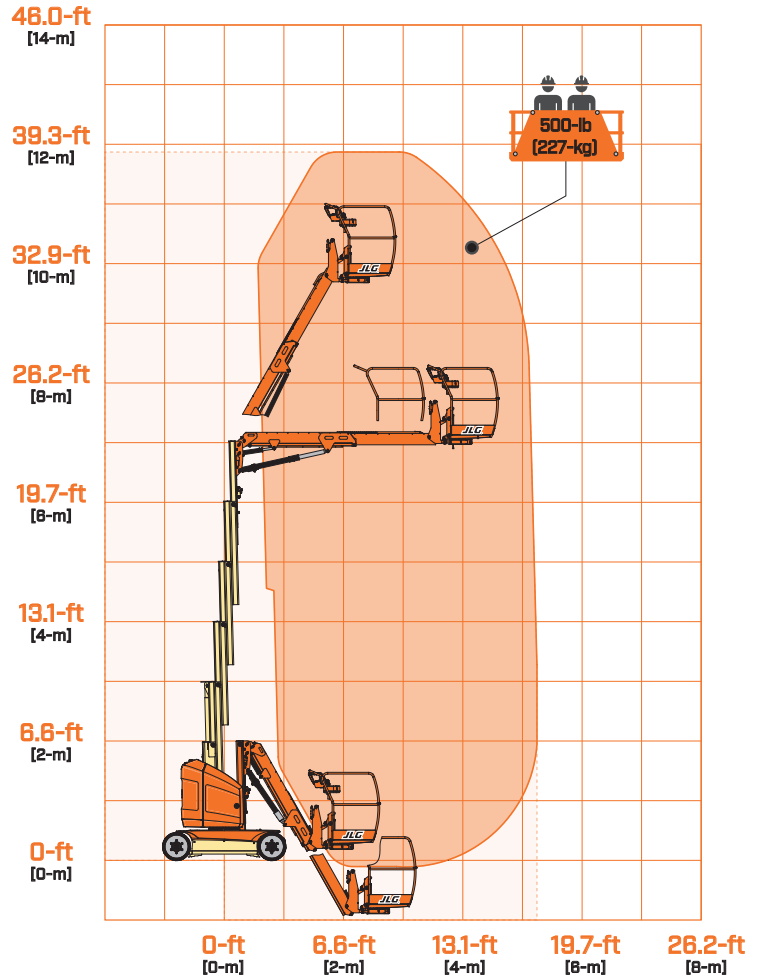
## DIMENSIONS

All dimensions are approximate



- A.** Platform Width 27.5-in / 0.70-m
- B.** Platform Length 41.3-in / 1.05-m
- C.** Machine Width 3-ft-11.25-in / 1.20-m
- D.** Tailswing 5.9-in / 15-cm
- E.** Machine Height 6-ft-6-in / 1.98-m
- F.** Machine Length 12-ft / 3.65-m (Drop Bar)
- G.** Wheelbase 5-ft 3-in / 1.60-m
- H.** Ground Clearance 3.9-in / 10-cm

## REACH DIAGRAM



We provide coverage for one (1) full year, and cover all specified major structural components for five (5) years. Due to continuous product improvements, we reserve the right to make specification and/or equipment changes without prior notification. This machine meets or exceeds applicable ANSI and CSA requirements based on machine configuration as originally manufactured for intended applications. Please reference the serial number plate on the machine for additional information.



**JLG INDUSTRIES, INC.**  
 Toll-free US 877-JLG-LIFT  
**JLG.com**  
 An Oshkosh Corporation Business